



## Spare Parts Catalogue

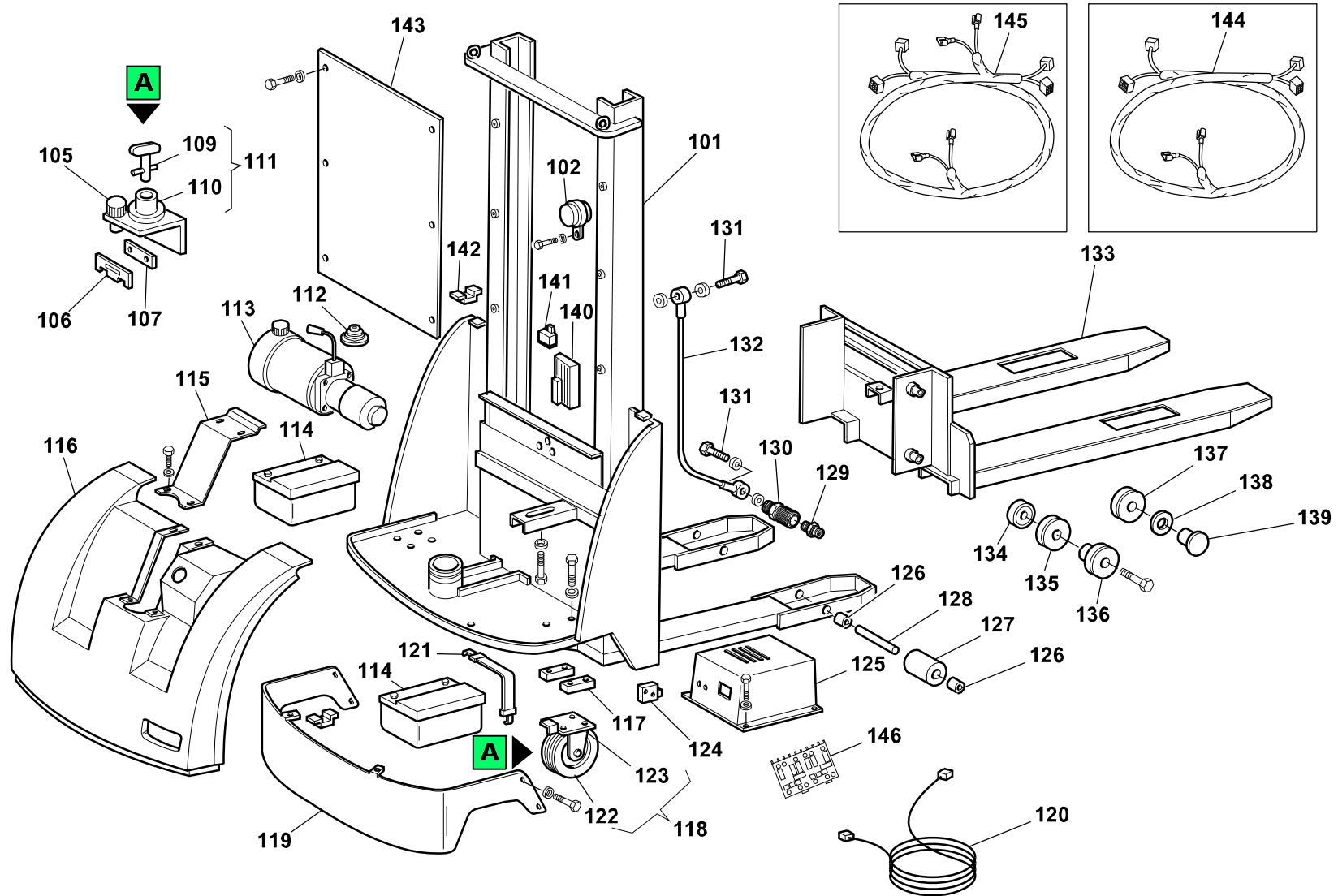
# GX12-29

Handling systems | Stackers

Valid for machine code: HC612000000

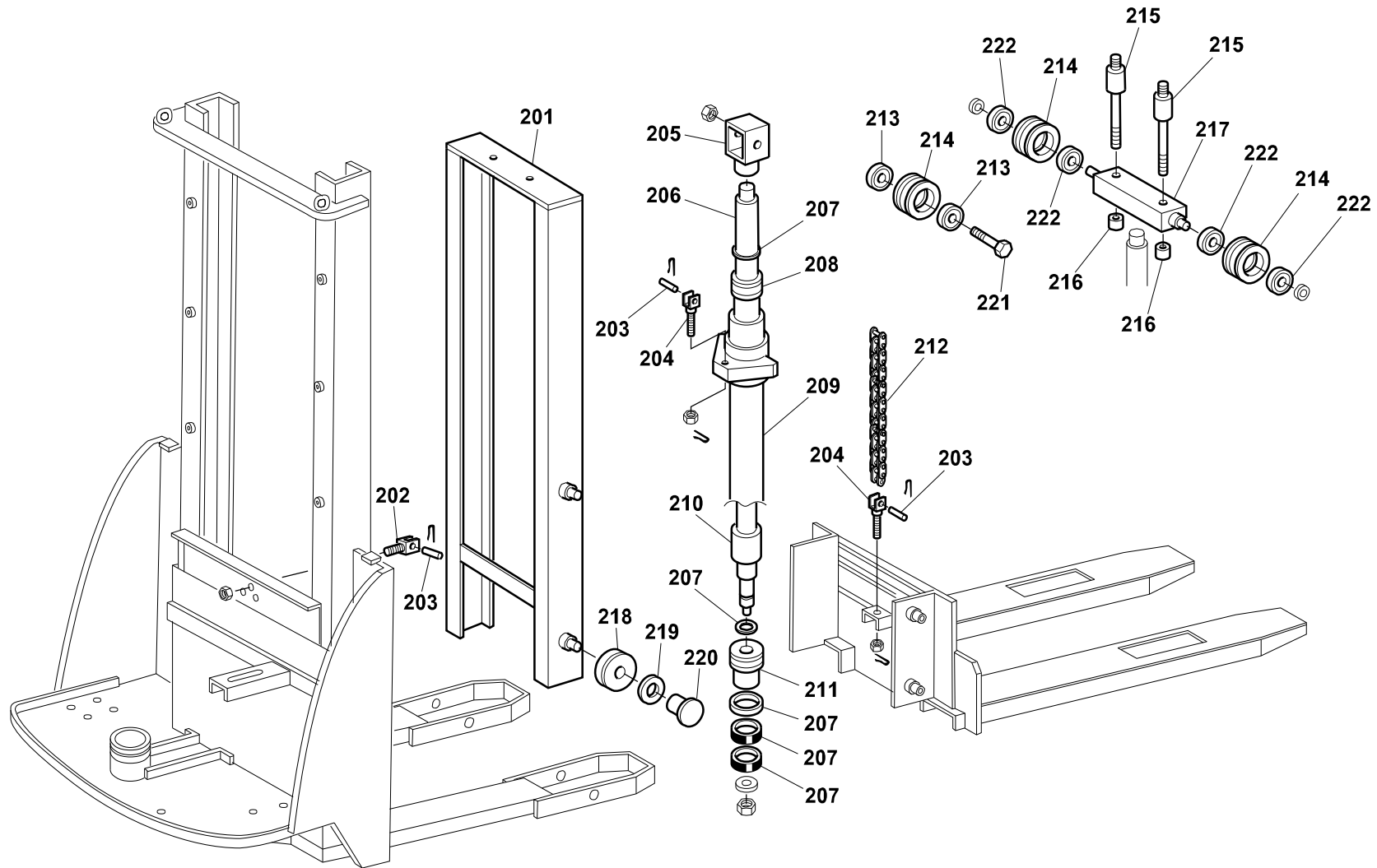
Revision: 0 (11/2006)

Copyright 2019 Pramac Group, All Rights Reserved.

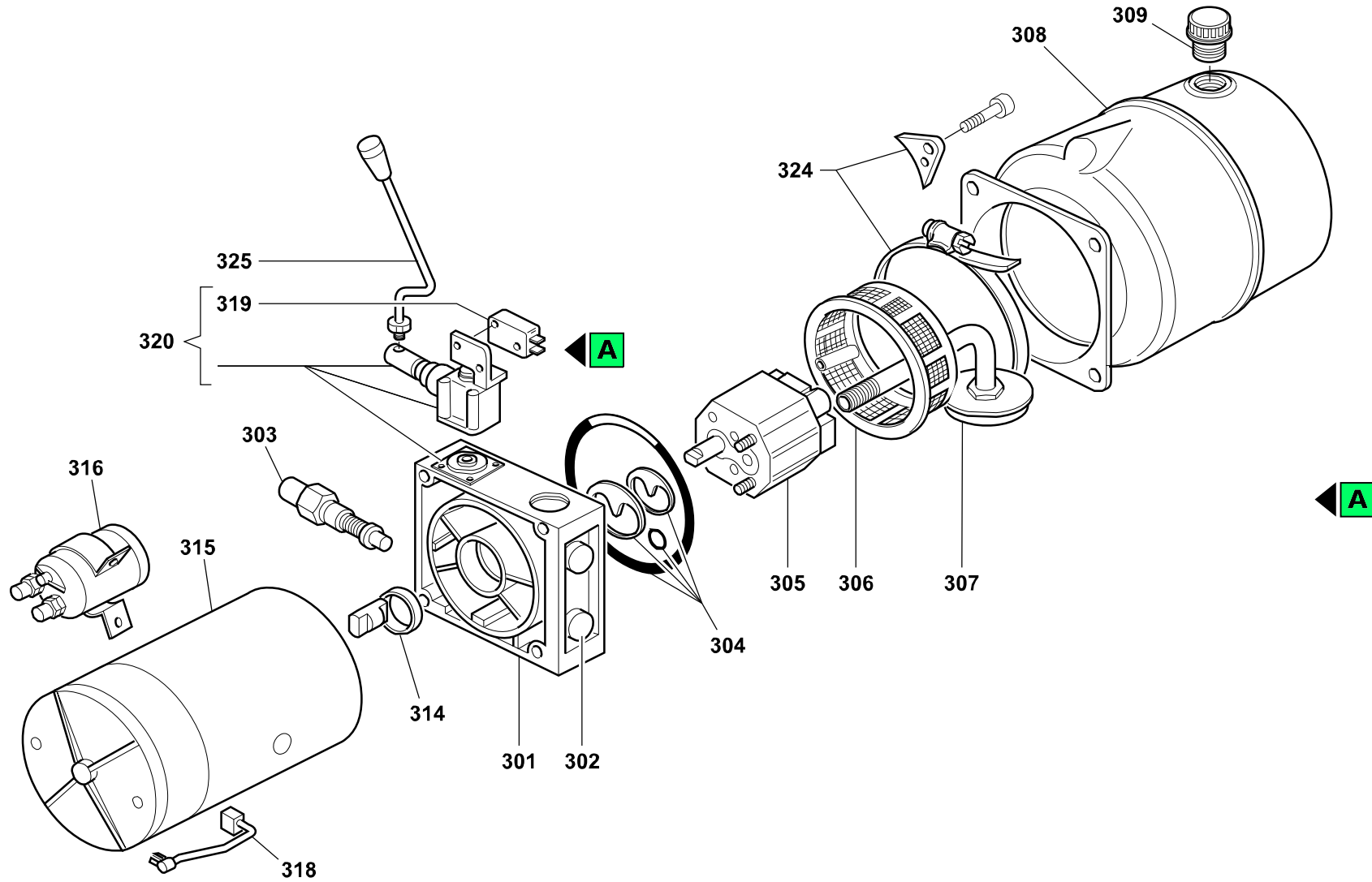


Position	Part Number	Description	Notes
101	V0311060034-PRAMAC	Telaio Gx 12/29 Vern.verde Pramac	-
102	G075110	Horn 24v Dc	-
105	G070625	Fuse Holder Screw Cap + Fuse 6.3a	-
106	G077540	Fuse 160a (rfm Reghel)	-
107	G070603	Fuse Holder X Fuse 160amp	-
109	G075220	Key X Battery Disconnecting Switch	-
111	G075102	Battery Disconnecting Switch 1 Pole	-
112	G052002	Rubber Bellows (for Stackers)(0-rab/010)	-
113	▲ G081021	Hydraulic Unit 222353003 Up100 (tx12- Gx10-12)	Valid for products with serial numbers until 2003HG001641
	▲ G081035	Hydraulic Unit Tx12-gx10/12 '06	
	▲ G081029	Central S3010001.000 X Tx12 - Gx10/12	Valid for products with serial numbers from 2003HG001642
114	G089702	Battery "exide Gel" 100ah-12v	-
	G099300006	Battery 85ah-12v	-
	G099300062	Semi-traction Plane Tubular Battery 157ah (c20) 12v	-
115	V0310018015-PRAMAC	Hood Guard Lock Gx10-12 Green Pram.	-
116	S0310018010	Hood Guard Gx 10-12	-
117	V01941-9005	Painted Wheel Spacer '06 Gx	-
118	G053328	Wheel Poly.c T150x40/49 C	-
119	S0313010039	Motor Wheel Protection Gx10 Painted	-
120	PTB00019	Cable 3x0.75 lecsk	-
121	G000112	Battery Elastic Webbing Gx10/12	-
	G000113	Battery Elastic Webbing Gx12 Plus	-
122	G053334	Polyurethane/aluminium Wheel T8017cc New X G10-te	-
123	G053412	Wheel Support 150-160/50 H.m.120 Mm.40	-
124	G075006	Limit Switch With Roller Pizzato Mkv11d15	-
125	▲ G099300059	Open Frame Battery Charger 20a-24v X Gx 12	Valid for products with serial numbers until LLI0035913
	▲ S000045930	High Frequency Battery Charger 12-24v 11,5a Bracket Gx/tx12 + Cable lec-schuko 2m	Valid for products with serial numbers from LLI0035913
126	S0302016026	Roller Spacer Sing.tx-gx (L.15) Zinc	-
127	S0302020117	Polyurethane Roller D82x70 + Bearing	-
128	S0302015025	Clevis Pin Tx/gx/lx "burnished"	-
129	G084103	Male/male Adaptors 3/8"	-
130	G085003	Flow Control Valve 3/8"	-
131	G084001	Screw Perforate (4 Holes ) 3/8" L 29 -0,5/0 Ch22	-
132	G083012	Tube R1at 3/8"	-
133	S0307050082	Complete Fork Painted Tx/gx 12/29	-
134	G010151	Bearing 6305 (25-62-17)	-
135	S0207016006	Sliding Roll Fork Tmc 10/16	-

Position	Part Number	Description	Notes
136	S0207018001	Fork Roller Guide Gx/tx	-
137	G019306	Bearing D70 (csf.002)	-
138	G019315	Contrast Plate '01	-
139	G019314 + G019315	-	-
140	▲ G076024	Electronic Board Curtis 1228-110a 24vngx12 (calibrated)	Valid for products with serial numbers from 1999HG000001 to 2000HG001435
	▲ G075050	Pramac Controller Rf050h70-120a X Gx 10	Valid for products with serial numbers from 2000HG001436 to 2004HG000739
	▲ G076024	Electronic Board Curtis 1228-110a 24vngx12 (calibrated)	Valid for products with serial numbers from 2004HG000740
141	G077201	Relay 30a 24v Contatto A Scambio	-
142	G034903	Cage Nut M8 Zn	-
143	S0310018006	Plexiglass Guard Tx10/20-16 Tx12/29-35 Gx12/29-35-38 Gx10/16 Fx12/29-35-38 G10 Vers.2	-
144	▲ S0318028018	Electric Wiring Cables Gx 12 (curtis)	Valid for products with serial numbers from 1999HG000001 to 2000HG001435
	▲ S0318028013	Electric Wiring Cables Gx 10-12 (pramac)	Valid for products with serial numbers from 2000HG001436 to 2003HG001641
	▲ S000045001	Cablaggio Elettrico Gx 10-12 (pramac)	Valid for products with serial numbers from 2003HG001642 to 2004HG000739
	▲ P0CD00009	Complete Harness Kit Gx12 '03	Valid for products with serial numbers from 2004HG000740
145	S0319060047	Second Speed Wiring Gx12	-
146	▲ PTB00014	Rectifier Card High Frequency 24v 11.5a Cbhd1 Cx14	Valid for products with serial numbers from LLI0035913
	▲ PTB00001	Elctronic Board For Open Battery Charger Cx Plus/cx/gx10/tx12/gx12	Valid for products with serial numbers until LLI0035913

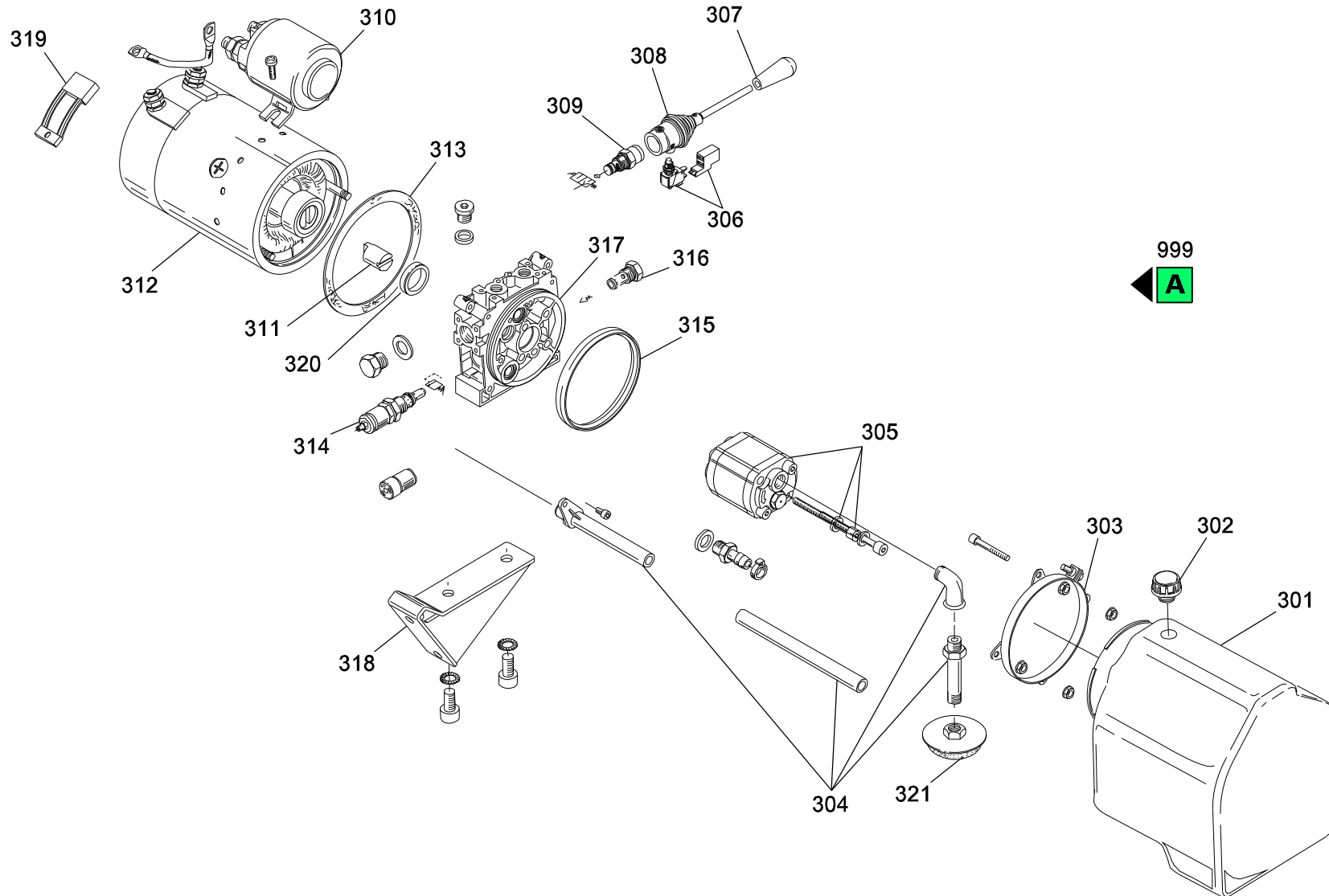


Position	Part Number	Description	Notes
201	S0305010170	Welded Second Stage Tx-gx 12/29	-
202	S000045502	Pettine Corto X Carr. 12q.li Catena Singola	-
	S0307015015	Short Chain Holder Te-tm-l/vt Zinc Plated	-
203	G062102	Flayer Chain Pin BI546 D6x33	-
204	S0300155003	Chain Holder Stacker 12q Single Chain	-
205	S0306051022	Cast Iron Pulley Holder Te-tm-l Painted	-
206	S0306053018	Piston Rod H2900	-
207	G090005	Gasket Set Fx12/g10-16 20/gx12//lr/te/tmc/tx12 Old	-
208	S0306041004	Cylinder Nut Ring Te/tm 10-12/29-36	-
209	▲ S000045034	Complete Cylinder '06 Fx-gx-tx12/29	-
	▲ S0306010159	Complete Cylinder Tx-gx 12/29 Painted	-
210	S000045602	-	-
	S0306056017	Cylinder Support L.105 Te-tm	-
211	S0306041008	Piston Te/tm 10-12/29-36	-
212	G062022	Flayer Chain Stub BI544-117p	-
213	G010401	Bearing 6204 2rs (20-47-14)	-
214	S0300201034	Chain Pulley Sing. X12q Burnished	-
215	S0306015052	Free Lift Pin L10-116	-
216	S0306015036	Free Lift Pin Spacer Te-tm	-
217	S0306012072	Double Pulley Holder L16 Painted "1998"	-
218	G019306	Bearing D70 (csf.002)	-
219	G019315	Contrast Plate '01	-
220	G019314 + G019315	-	-
221	S0306055043	Cast Iron Pulley Pin Holder Burnished	-
222	G010403	Bearing 6005 2rs (25-47-12)	-

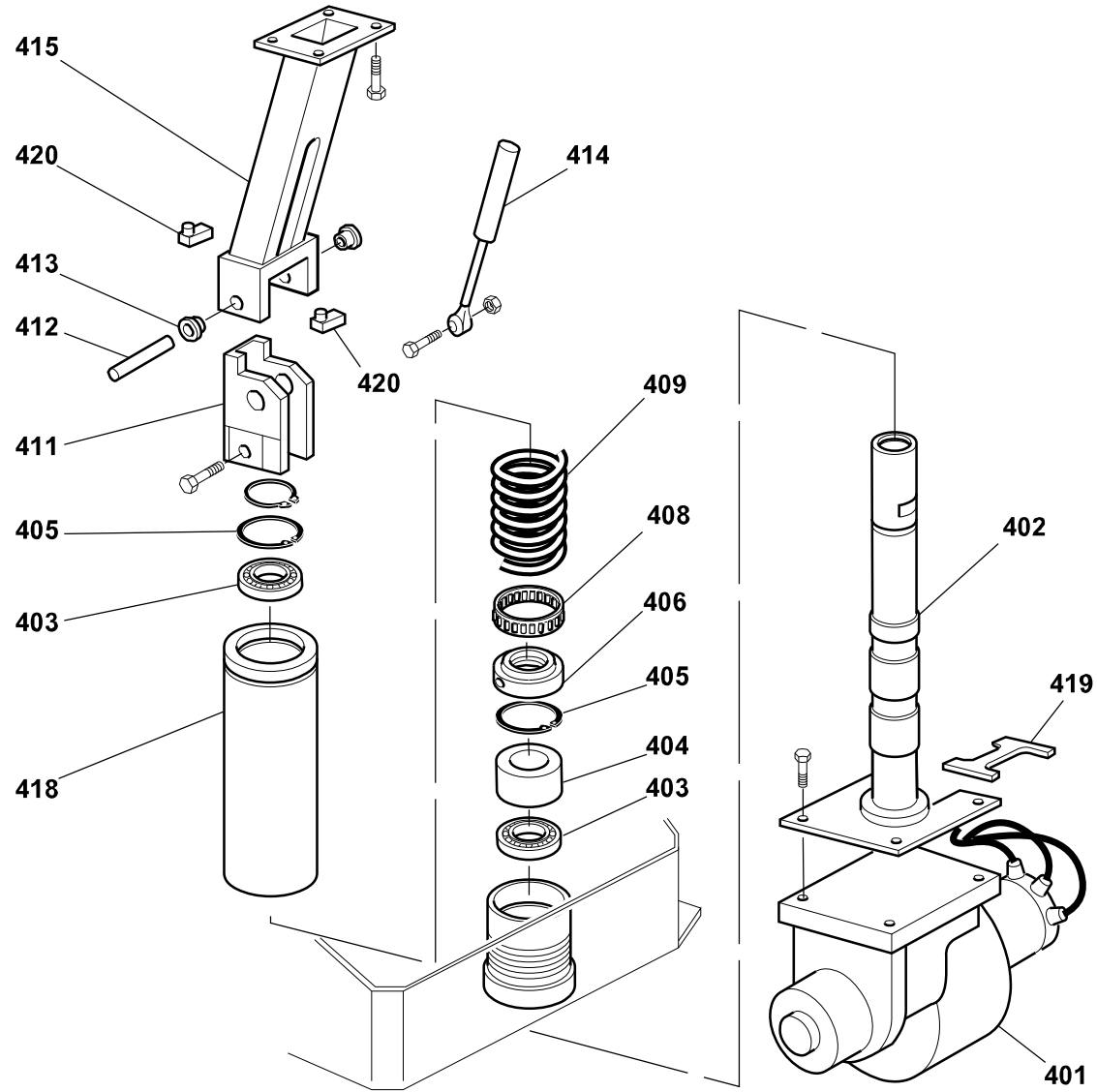


Position	Part Number	Description	Notes
301	G082195	Body Up100 K1g3-06+oil Seal	-
302	G082171	Non Return Valve Rs3/817-03	-
303	G082107	Relief Valve Vm01 Hdm10 T.95-210	-
304	G082165	Body Gasket Set Up100	-
305	G082100	Pump Ap100/1.7 S.409+cop.748220020	-
306	G082090	Filter Conv.150 Micron (757500070)	-
307	G082196	Group A.h105178-900 250m	-
308	G082228	Tank Up100 P08,or-bbt (673450200)	-
309	G082099	Loading Cap Sf1/2g(hidr.678000310)	-
314	G082242	Joint Completee145-e163	-
315	G082230	Engine C240ak/y0/d02p 024v 2.2	-
316	G082127	Complete Relay 24v C.c. P.c-e-f-g (ef.)	-
318	G082233	Brushes 24v	-
319	G082223	Microswitch For Manual Command Up50-up100	-
320	G082224	Valve Zr817/22-tvml + Cap	-
324	G082227	Tank Clamping Set Pl. Up100 6-14l.	-
325	G082232 OUT OF	-	-
999	▲ G081035	Hydraulic Unit Tx12-gx10/12 '06	
	▲ G081021	Hydraulic Unit 222353003 Up100 (tx12- Gx10-12)	Valid for products with serial numbers until 2003HG001641

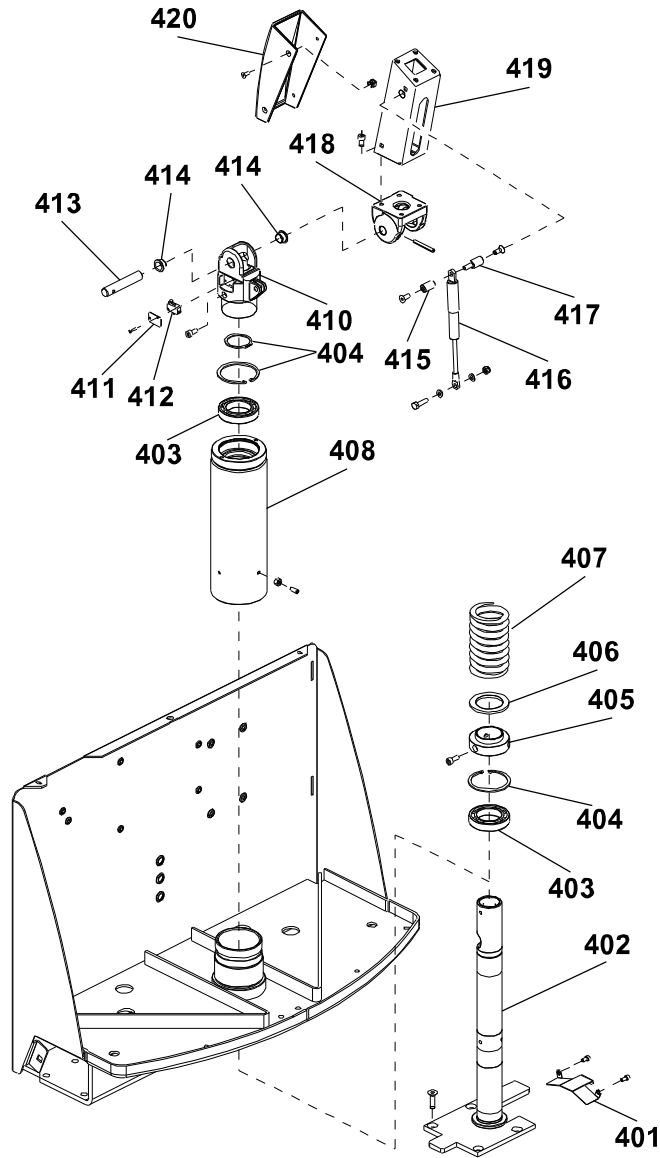




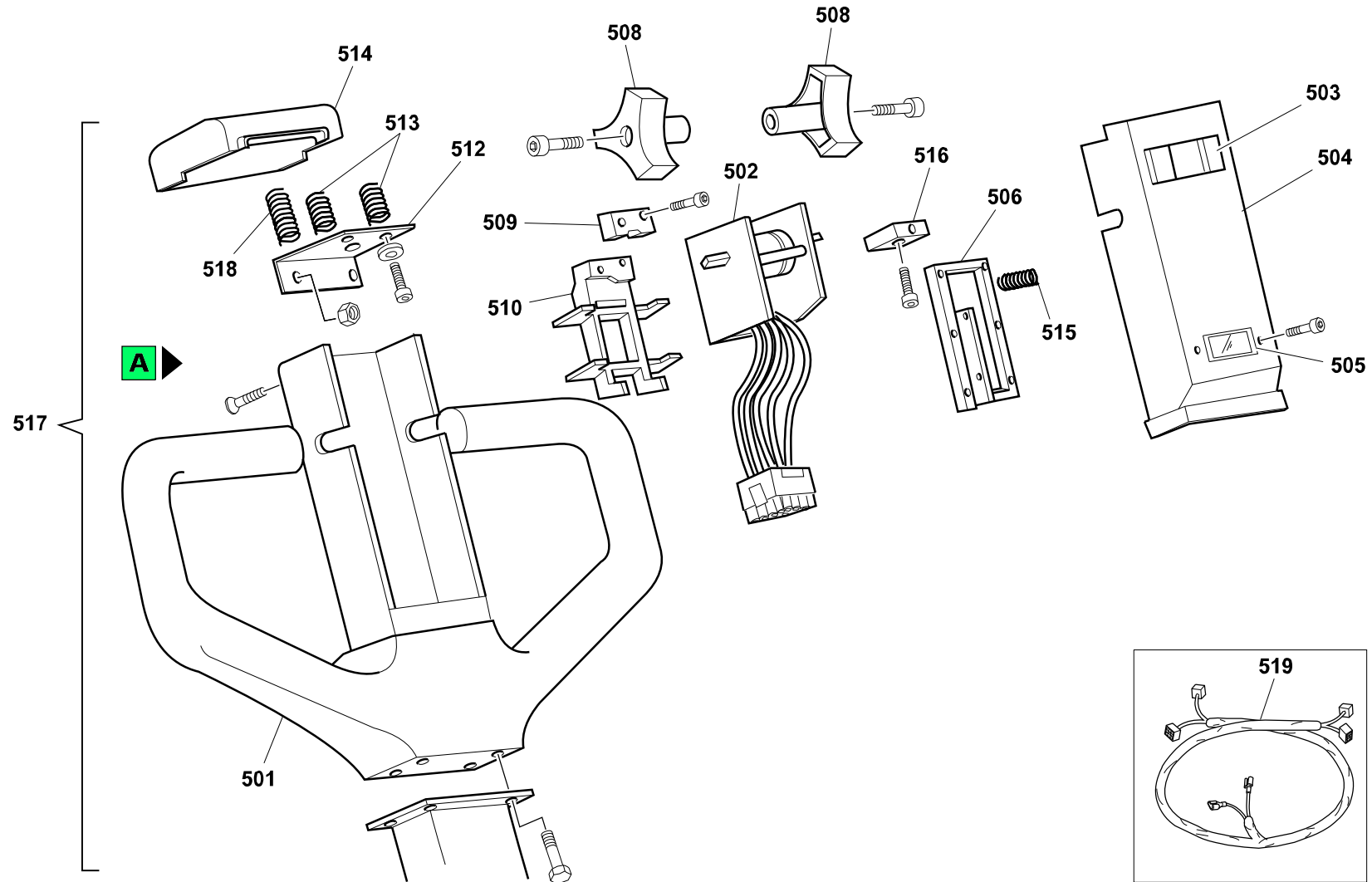
Position	Part Number	Description	Notes
301	PCY61214500	Reservoir Bottle	-
302	PCY49154500	Oil Cap Tank Tx Hydr-app	-
303	PCY25004800	Band For Hydraulic Unit H	-
304	PCY12002	Kit Tubi Tx Hydr-app	-
305	PCY17050006	Hydraulic Unit Pump Hx	-
306	PCY46109900	Microswitch	-
307	PCY49104600	Pomello Centralina Hydr-app	-
308	PCY25005800	Hydraulic Power Pack Complete Lever	-
309	PCY20023000	Valvola Tx10/12	-
310	G082127	Complete Relay 24v C.c. P.c-e-f-g (ef.)	-
311	PCY60410600	Giunto A Penna Per "mc" Con Motore Elettrico 2.05-2.2kw E Pompe Gr.1	-
312	PCY24011800	Electr. Motor "fu" 24vcc 2,2kw S-t - Mft	-
313	PCY61200100	Gasket For Hydraulic Unit H	-
314	PCY21000001	Valvola Max 50-210 Bar	-
315	PCY61212400	Hydraulic Unit O-ring Hx	-
316	PCY20020400	Hydraulic Unit Retention Valve Hx	-
317	PCY71013005	Central Flange	-
318	PCY17010067	Fixing Tx	-
319	PCY00004056	Brush Kit Gx/10/12 Tx12	-
320	PCY60507900	Spacer For Hydraulic Unit H	-
321	PCY49122100	Filtro Piatto D.63 Da G3/8 Q=12	-
999	▲ G081029	Central S3010001.000 X Tx12 - Gx10/12	
	▲ G081035	Hydraulic Unit Tx12-gx10/12 '06	



Position	Part Number	Description	Notes
401	▲ G074426	Motor Wheel 700w 24v Magn.perm.x Gx12	Valid for products with serial numbers until 2002HG001773
	▲ G074431	Motor Wheel 700w 24v Permanent Magnet X Cx14	Valid for products with serial numbers from 2002HG001774
402	S0313060047	Motor Wheel Support Gx 12 Painted	-
403	G010214	Bearing 6010 2rs(50-80-16)	-
404	S0303018002	Motor Wheel Sliding Bushing L10	-
405	G090021	Stackers Motor Wheel Seeger Kit	-
406	S0303016030	Motor Wheel Shaft Washer L10	-
408	S0313080057	Complete Motor Bearing Stacker	-
409	G001141	Spring De78 F.11x185 P.22 X L10-I16-I/vt	-
411	P0KI00006	Tiller Kit L/k20	-
412	S0304013027	Handle Pin Gx-lx-k20 "burnished"	-
413	G016353	Self-lubricating Bushing 20x28x35 L=20	-
414	▲ G001728	Gas Spring Gx Ama R20 Z10 Lta 255 Mm 170 N	Valid for products manufactured from 01/04/2004
	▲ P3ML00003	Gas Spring 198.236.20	Valid for products manufactured until 31/03/2004
415	S0304010142	Handle Support Painted "l"-k20"	-
418	S0303010139	Spring Loader Lx-gx Zinc Plated	-
419	S0303010153	Motor Wheel Wiring Bracket L10-I16	-
420	G075004	Microswitch For Tow Bar L10	-

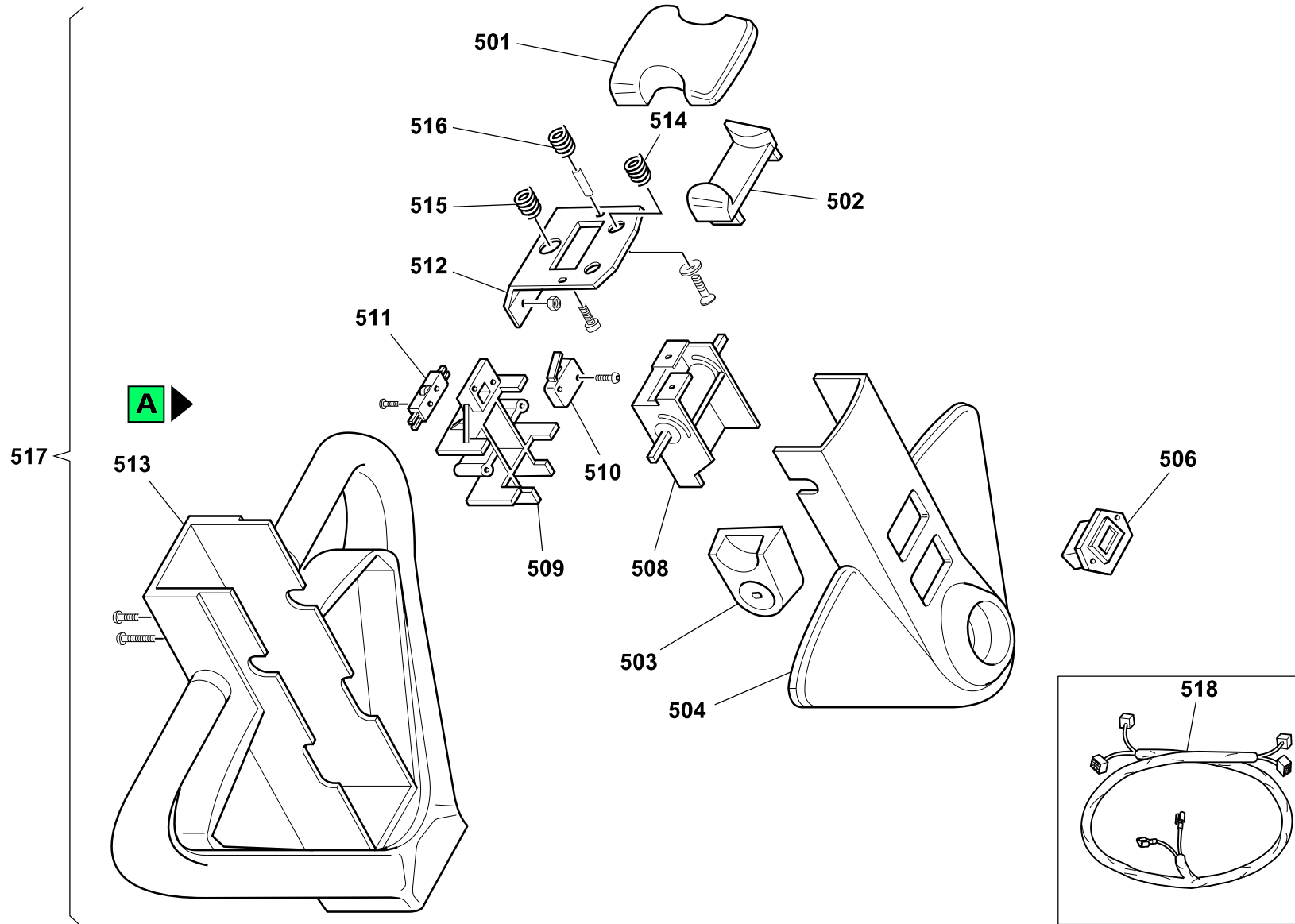


Position	Part Number	Description	Notes
401	S0303010153	Motor Wheel Wiring Bracket L10-I16	-
402	S0313060047	Motor Wheel Support Gx 12 Painted	-
403	G010214	Bearing 6010 2rs(50-80-16)	-
404	G090021	Stackers Motor Wheel Seeger Kit	-
405	S0303016030	Motor Wheel Shaft Washer L10	-
406	S0313080057	Complete Motor Bearing Stacker	-
407	G001141	Spring De78 F.11x185 P.22 X L10-I16-I/vt	-
408	S0303010139	Spring Loader Lx-gx Zinc Plated	-
410	V000044101-9005O	Supporto Timone Gx-lx '03 Vern	-
411	G09416	Tiller Switch Protection Plate Gx-lx '03	-
412	G075004	Microswitch For Tow Bar L10	-
413	S000025501	Tiller Pin Gx-lx '03 Burnished	-
414	G016307	Boccola Flangiata Du 18-20	-
415	S000025503	Tiller Spacer Gx-lx '03	-
416	G001728	Gas Spring Gx Ama R20 Z10 Lta 255 Mm 170 N	-
417	S000025502	Burnished Tiller Screw-nut Spacer Gx-lx '03	-
418	V000044102-9005O	Tiller Bracket Gx-lx '03 Painted	-
419	V09415-9005	Tiller Box Gx-lx '03 Painted	-
420	S000025901	Coperchio Timone Gx-lx '03	-

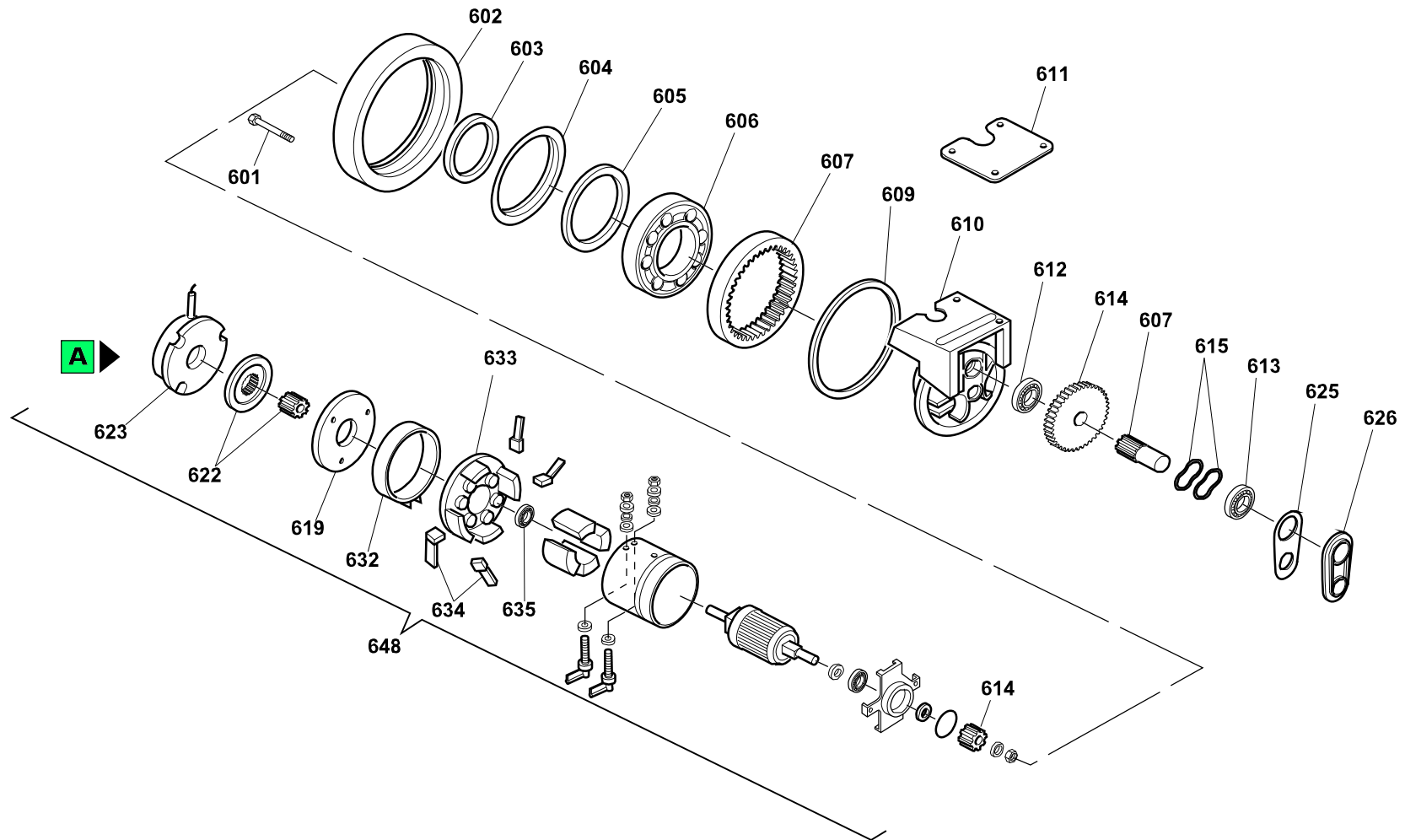



Position	Part Number	Description	Notes
501	S0304010208	Coated Handle (poly) Lk	-
502	G077002	Electronic Throttle Et160	-
503	S0304018020	Handle Pushbutton Switch Lk	-
504	S0304018019	Cover Lk X Stackers	-
505	G079005	Battery Level Gauge Curtis	-
506	S0304018022	Handle Microswitch Support Lk	-
508	S0304018018	Handle Butterfly Lk	-
509	G075016	Microswitch 5a 250v	-
510	S0304018021	Handle Support Potentiometer Lk	-
512	S0304017011	Handle Emergency Support Plate Lk	-
513	G001132	Spring De11 Wire 1 - 4 Turns L10 Mol/zn	-
514	S0304018017	Handle Emergency Lk	-
515	G001131	Spring De5,6 F0,5 - 10 Turns L20 Zinc Plated	-
516	G075017	Microswitch Xg52-j21	-
517	S0304150299	Complete Handle Lk Gx12	-
518	G001134	Spring De12,3 F1 - 9 Turns - L=24 Zinc Plated	-
519	S0319012001	Cable Tiller L/g (curtis)	-

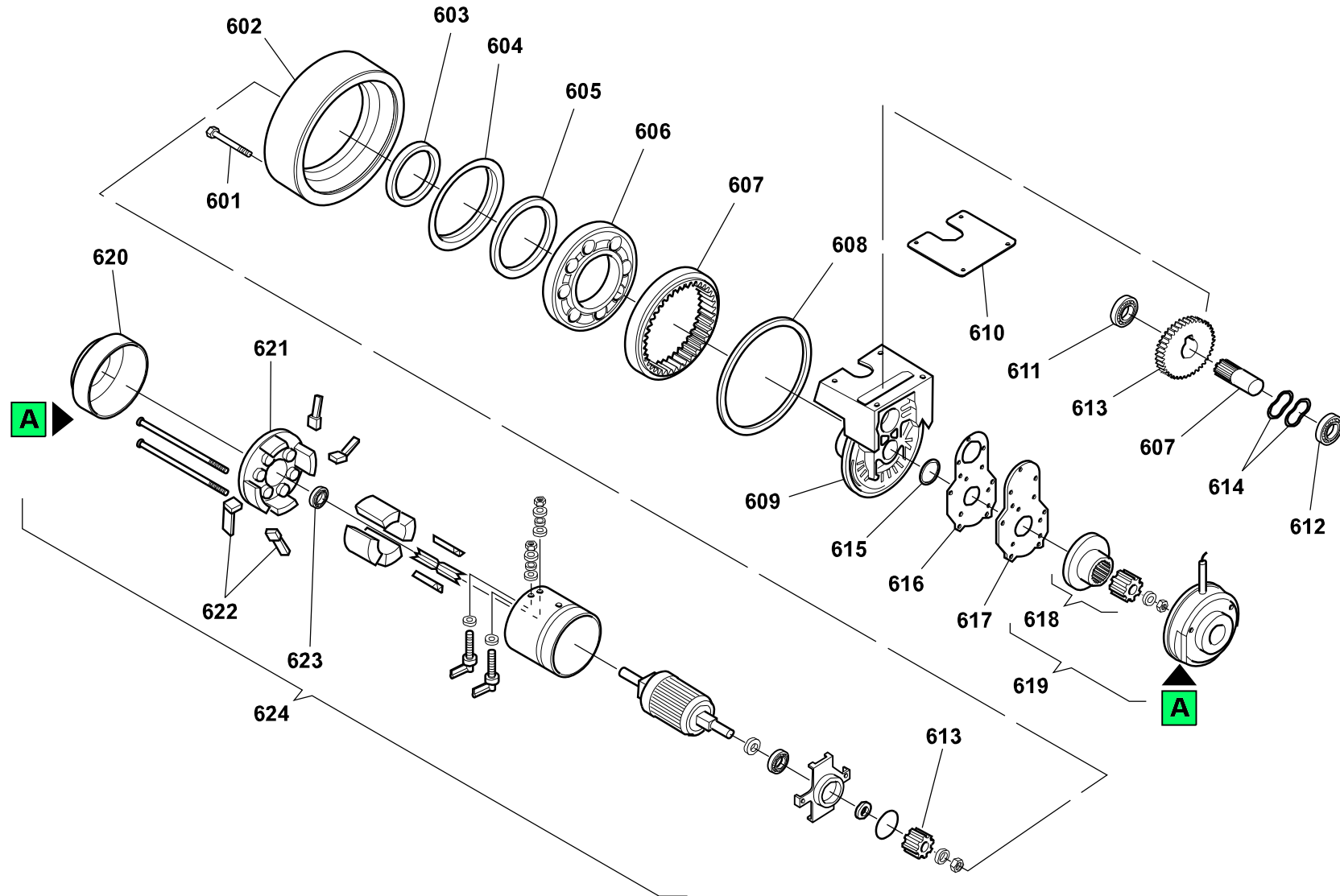





Position	Part Number	Description	Notes
501	S0304178033	Handle Emergency '00	-
502	S0304178032	Handle Horn Rocker Switch '00	-
503	S0304178031	Handle Butterfly '00	-
504	S0314108031	Handle Cover '00 Gx Stackers Series	-
506	G079005	Battery Level Gauge Curtis	-
508	▲ G077007	Electronic Throttle Gph/ht3 X Gx10 Wired	Valid for products with serial numbers until 2004HG000739
	▲ G077002	Electronic Throttle Et160	Valid for products with serial numbers from 2004HG000740
509	S0304178034	Handle Potentiometer Support '00	-
510	G075017	Microswitch Xg52-j21	-
511	G075016	Microswitch 5a 250v	-
512	G07330	Handle Emergency Support Plate '00	-
513	S0304178044	Coated Handle '00 (poly)	-
514	G001132	Spring De11 Wire 1 - 4 Turns L10 Mol/zn	-
515	G001134	Spring De12,3 F1 - 9 Turns - L=24 Zinc Plated	-
516	G001131	Spring De5,6 F0,5 - 10 Turns L20 Zinc Plated	-
517	▲ S0314110065	Handle '00 Complete Stacker Gx	Valid for products with serial numbers until 04/07/2006
	▲ S000045005	Complete Tiller '00 Gx12	Valid for products with serial numbers from 04/07/2006
518	▲ S0319012001	Cable Tiller L/g (curtis)	
	▲ P0CD00015	Electric Wiring Gx10/12 Edition li	



Position	Part Number	Description	Notes
601	G073242	Screw Wheel	-
602	G073243	Motor Wheel Rubber Ring Te96/cx14/gx12	-
	G073330	Motorwheel Rubber Ring Eco. 250x76 13270	-
	G073331	Motor Wheel Adiprene Ring Te96/cx14/gx12	-
	PLC13265S	Rubber Ring Gx12-cx14-te	-
	PLC13268S	Anello Motoruota Vulk. Scolpito Te/gx12/cx14	-
603	G073006	Motor Wheel Ring	-
604	G073302	Protection Ring	-
605	G073007	Motor Wheel Gasket	-
606	G073009	Bearing	-
607	G073260	Pinion +crown Wheel	-
609	G073245	Motor Wheel Gasket	-
610	G073246	Motor Wheel Casting	-
611	G073011	Motor Wheel Gasket	-
612	G073247	Bearing	-
613	G073026	Bearing 16006	-
614	G073029	Pinion + Driver Wheel	-
615	G073030	Compensation Ring	-
619	G073016	Brake Holder Plate	-
622	G073066	Brake Lining +hub	-
623	G073036	Electric Brake K1 Hole Cima 24v	-
625	G073013	Gasket	-
626	G073014	Cover	-
632	G073032	Paddled Clamp	-
633	G073019	Slip Support	-
634	G073068	Brushes Kit Motor 24v	-
635	G073249	Slip Bearing 6201 2rsrc3	-
648	G073209	Permanent Magnet Motor.	-
999	 G074426	Motor Wheel 700w 24v Magn.perm.x Gx12	Valid for products with serial numbers until 2002HG001773



Position	Part Number	Description	Notes
601	G073242	Screw Wheel	-
602	G073243	Motor Wheel Rubber Ring Te96/cx14/gx12	-
	G073330	Motorwheel Rubber Ring Eco. 250x76 13270	-
	G073331	Motor Wheel Adiprene Ring Te96/cx14/gx12	-
	PLC13265S	Rubber Ring Gx12-cx14-te	-
	PLC13268S	Anello Motoruota Vulk. Scolpito Te/gx12/cx14	-
603	G073006	Motor Wheel Ring	-
604	G073302	Protection Ring	-
605	G073007	Motor Wheel Gasket	-
606	G073009	Bearing	-
607	G073260	Pinion +crown Wheel	-
608	G073245	Motor Wheel Gasket	-
609	G073246	Motor Wheel Casting	-
610	G073011	Motor Wheel Gasket	-
611	G073247	Bearing	-
612	G073026	Bearing 16006	-
613	G073029	Pinion + Driver Wheel	-
614	G073030	Compensation Ring	-
615	PLC90117	Protection Ring	-
616	PLC13912	Motor Wheel Gasket Cx14	-
617	PLC13716	Brake Holder Plate Cx14	-
618	G073066	Brake Lining +hub	-
619	G073036	Electric Brake K1 Hole Cima 24v	-
620	PLC35105	Motor Fan Protection Cx14	-
621	G073019	Slip Support	-
622	G073068	Brushes Kit Motor 24v	-
623	G073249	Slip Bearing 6201 2rsrc3	-
624	PLC30294	Cx 14 Drive Motor	-
888	 G074431	Motor Wheel 700w 24v Permanent Magnet X Cx14	Valid for products with serial numbers from 2002HG001774