

Pramac is a leading supplier of competitive material handling products, branded **Lifter by Pramac**, internationally recognized for its quality and performance.



www.lifter.it



Worldwide Service & Parts Online Center: www.pramacparts.com

PROJECT COORDINATION MKTG Department@PRAMAC
The product images shown are for illustration purposes only and may not be an exact representation of the product. The manufacturer reserves the right to introduce changes to models and features without prior notice.

agile

THE CONVENIENT SOLUTION
FOR YOUR BUSINESS



I LIKE
TO WORK
agile!



THE INNOVATIVE
PALLET TRUCK



AGILE: THE INNOVATIVE SOLUTION COMBINING ELECTRIC AND MANUAL FUNCTION FOR CONVENIENT USABILITY.

The first motorized pallet truck with **two motor wheels** for better stability and traction. Compact, light, simple, easy to use.



COMPACT AND LIGHT

Ideal for use in any application where space and weight is critical.



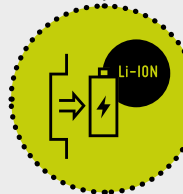
FAST MANUAL LIFTING

Quicklift option enables you to lift the pallet in just two strokes.



KEY SWITCH

Pocket size key switch for every day practicality.



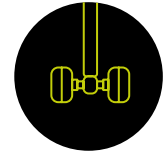
LI-ION BATTERY

Light battery easy to remove for recharging and continuous operation with spare battery.



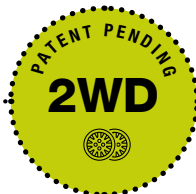
HIGH SPEED

Fast and efficient motorised wheels, with reduced noise and easy maintenance.



ELECTRONIC TRACTION CONTROL

Control to avoid wheel spinning and get the maximum in any situation (high torque for slopes, high speed for plane surface use).



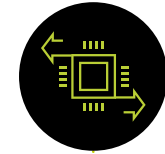
DOUBLE TRACTION WHEEL

The first pallet truck with 2 traction wheels in the market, for highest stability, better traction and durability.



NON-MARKING WHEELS

Durable rubber wheels which don't mark the surface.



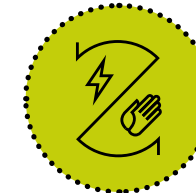
ON-BOARD COMPUTER

Front OLED display provides valuable info on truck activity and allows performance setup.



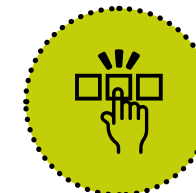
WEATHERPROOF OPTION

IP54 protection for outdoor use.



ELECTRIC/MANUAL SWITCH

Switching to manual mode enables to move easily in narrow space and in eventual case of low battery.



ALL FRAMES USE

Separate drive unit can be combined with frames of any size or metal.



ERGONOMIC TILLER

3D design, special coating, finger tip control for the most agile use in any situation.



LOW MAINTENANCE COST

Simple design with very few components and wiring enabling easy and fast maintenance.



1,2 TONS CAPACITY



AGILE IN EVERY SITUATION.

Compact as a standard HPT, it can be used across any site to make your job easier.



FAST AND EASY

The 2WD system makes the truck fast (5,3 km/h) and easy to drive, increasing safety and productivity.

Fingertip electric/manual switch makes the AGILE as a standard HPT.

POWERFUL AND STABLE

Thanks to the high torque and to the 2WD system, loads up to 1,2 tons can be easily moved. Ideal for loading/unloading and everyday last mile deliveries.

Slopes and rough terrains become AGILE.



SILENT AND COMPACT

Reduced sound emissions (AC motors), compact size and small turning radius makes it an ideal product for mini markets and retail shops.

FAST RECHARGE CONTINUOUS RUNNING

Long life Li-Ion battery technology for occasional and fast charging (2 hours). Quick and easy charging process by simply removing the battery from the truck. This system allows extreme versatility and continuous operation (if using additional spare battery).



CONVENIENT FOR ALL.

USER ADVANTAGES

PERFORMANCE

- 1.2 TONS** CAPACITY: To cover all logistic needs.
- 5.3 Km/h** MAX SPEED: Fastest in the category.
- 86 KG** WEIGHT: Lightest in the category.
- 5 %** MAX GRADEABILITY FULL LOAD: Traction control to maximize torque on slopes.
- 1382 mm** TURNING RADIUS: Same as a HPT.
- ELECTRIC/MANUAL SWITCH**: Easy and versatile.
- 2WD** DOUBLE TRACTION WHEEL SYSTEM.
- IP54** WEATHERPROOF VERSION: For outdoor use (option).

LONG LIFETIME LI-ION BATTERY SYSTEM

- 3 H** AUTONOMY: Continuous running with 600 kg average load at full speed.
- 2 H FULL CHARGE** FAST AND OCCASIONAL RECHARGE.
- NO GAS EMISSION RECHARGE** ECO-FRIENDLY: Possibility to make it indoor in any place.
- 24/7** CONTINUOUS RUNNING: Using spare battery.

EASY BATTERY REMOVAL AND FAST RECHARGING
Two types of charger available (bench and wall mounted) with standard and fast charging time.

BUYER ADVANTAGES

- HIGHEST ROI**
 - Lowest capital investment
 - High productivity (fastest in the category)
 - Low maintenance cost
- SAFETY**
 - Manual running mode when needed
 - Electric brake for slope use
 - Emergency and belly buttons
- HEALTH**
 - Reduces effort and improves health & safety in the work place

WIDE PRODUCT MODULARITY.

Two drive unit versions to cover any specific needs.

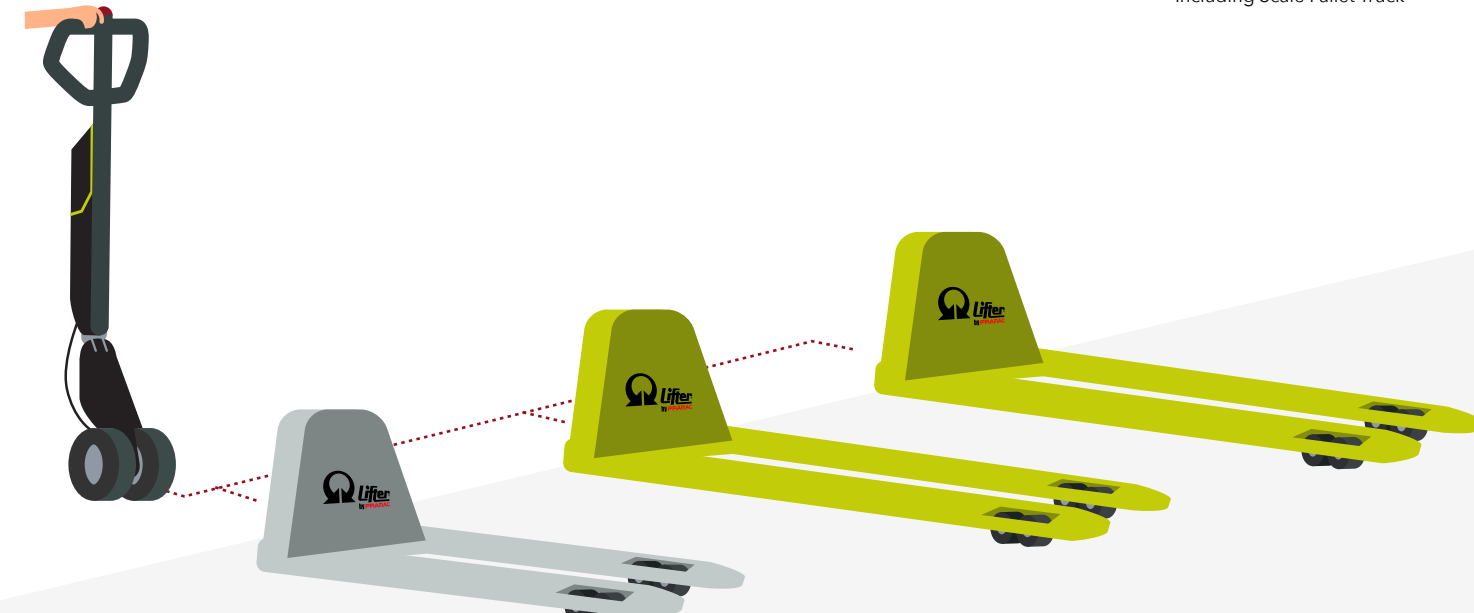
- LED INDICATOR**
- DISPLAY**
- BATTERY**: 36V-10,4 AH or 36V-12,8 AH
- OPTIONS**: QUICKLIFT and IP54

ON-BOARD COMPUTER WITH 6 SELECTABLE SCREENS

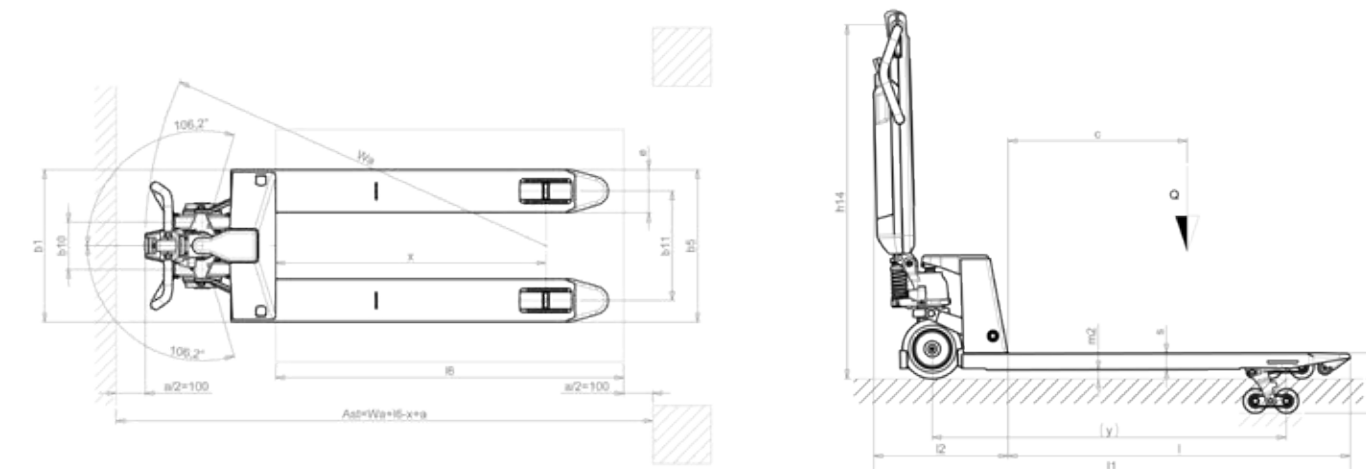
- AUTONOMY**
 - 1.1 Battery status indicator (%)
- HOURLY METER**
 - 2.1 Partial working time meter (h)
 - 2.2 Total working time meter (h)
- DISTANCE**
 - 3.1 Trip distance (km)
 - 3.2 Total distance (km)
- MAX. SPEED SETTING**
- DIAGNOSTIC**
- ERROR**

ALL DIFFERENT FRAMES TYPES AND FORK LENGTHS*

* Including Scale Pallet Truck



TECHNICAL SPECS.



	agile	agile PLUS
DESCRIPTION		
1.2 MODEL	AGILE S2-S4	AGILE PLUS S2-S4
1.3 DRIVE	Electric	Electric
1.4 OPERATOR TYPE	Pedestrian	Pedestrian
1.5 LOAD CAPACITY	kg 1200	kg 1200
WEIGHT		
2.1 SERVICE WEIGHT	kg 86-88	kg 86-88
TYRES/CHASSIS		
3.1 TYRES (FRONT - REAR)	Rubber - Poly	Rubber - Poly
3.2 TYRE SIZE, FRONT (Ø x width)	200x40	200x40
3.3 TYRE SIZE, REAR (Ø x width)	82x82-60	82x82-60
DIMENSIONS		
4.9 HEIGHT OF TILLER IN DRIVE POSITION MIN/MAX	h ₁₄ mm 710/1185	710/1185
4.19 OVERALL LENGTH	l ₁ mm 1600	1600
4.20 LENGTH TO FACE OF FORKS	l ₂ mm 450	450
4.22 FORK DIMENSIONS	s/e/l mm 55/150/1150	55/150/1150
4.25 DISTANCE BETWEEN FORK ARMS (MIN/MAX***)	b ₃ mm 525	525
4.34 AISLE WIDTH FOR PALLETS 800x1200 LENGTHWISE	A _{st} mm 2063	2063
4.35 TURNING RADIUS	W ₁ mm 1382	1382
PERFORMANCE DATA		
5.1 TRAVEL SPEED, LADEN/UNLADEN	km/h 4,2/5,3	4,2/5,3
5.8 MAX GRADEABILITY, LADEN/UNLADEN	% 5/15	5/15
5.10 SERVICE BRAKE	Electric	Electric
ELECTRIC MOTORS		
6.1 DRIVE MOTOR POWER	kW 2x0,25	2x0,25
6.4 BATTERY VOLTAGE, NOMINAL CAPACITY C5	V/Ah 36/10,4	36/12,8
6.5 BATTERY WEIGHT	kg 3	3
8.4 SOUND LEVEL AT DRIVER'S EAR	dB(A) 60	60

Powder Coated version, available in fork size (mm): 800x525, 950x525, 1000x525, 1150x525, 1220x525, 1350x525, 1500x525, 1800x525, 2000x525, 1000x685, 1150x685, 1220x685
Galvanized version, available in fork size (mm): 800x525, 1000x525, 1150x525, 1220x685
Scale version, available in fork size (mm): 1185x555

