

Spare Parts Catalogue

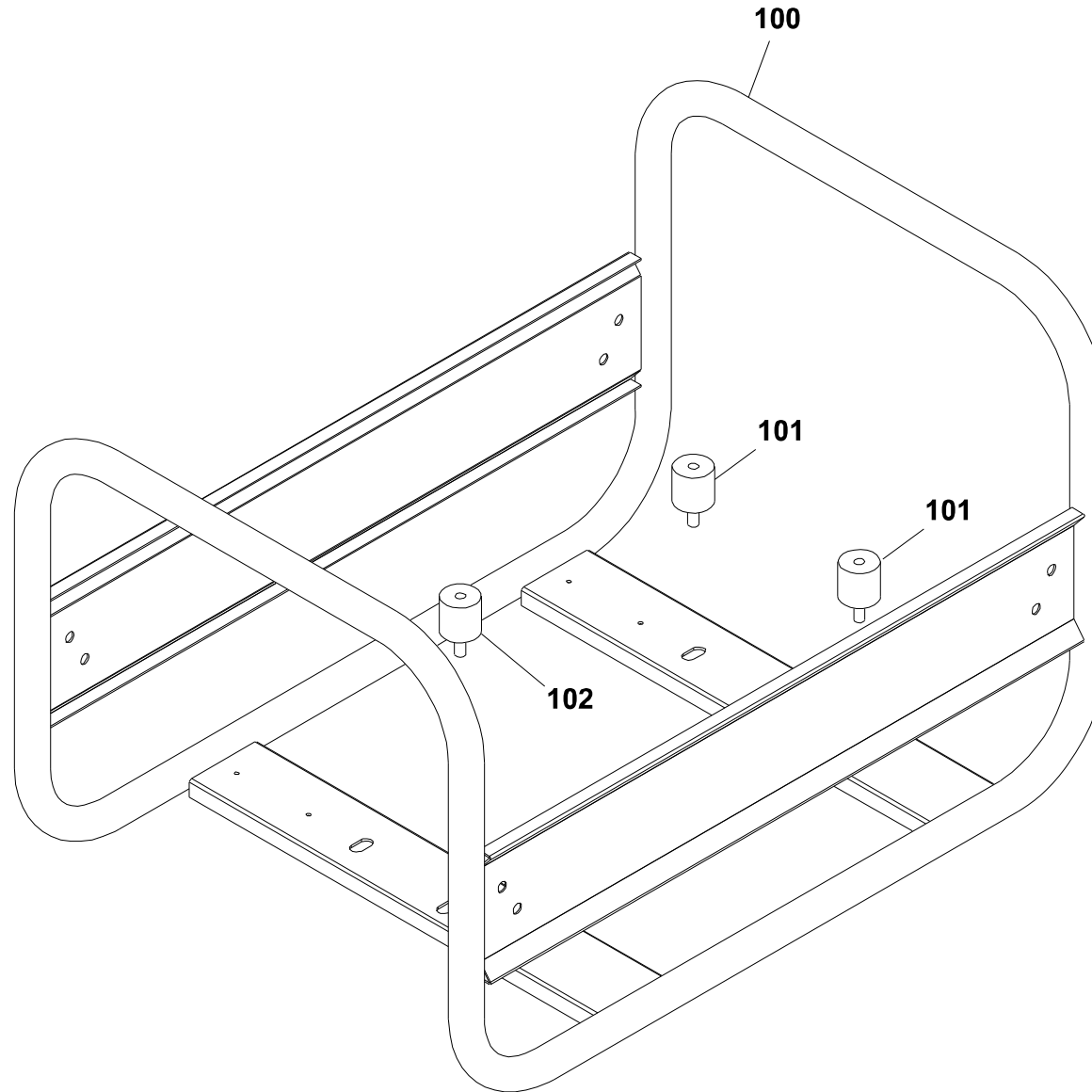
E5000-MONOPHASE

Power systems | Generating sets

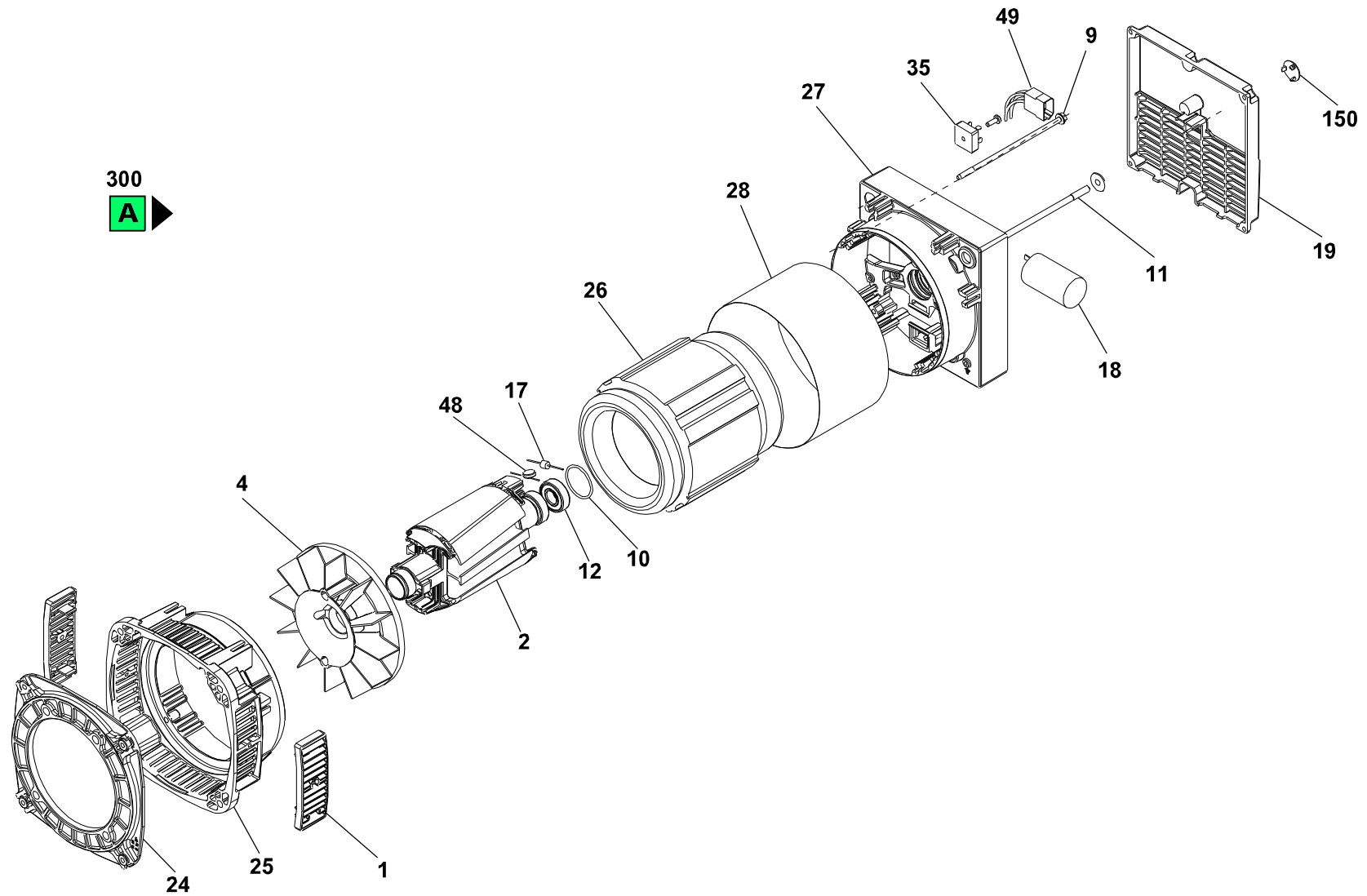
Valid for machine code: PA432SHI000

Revision: 0 (4/2007)

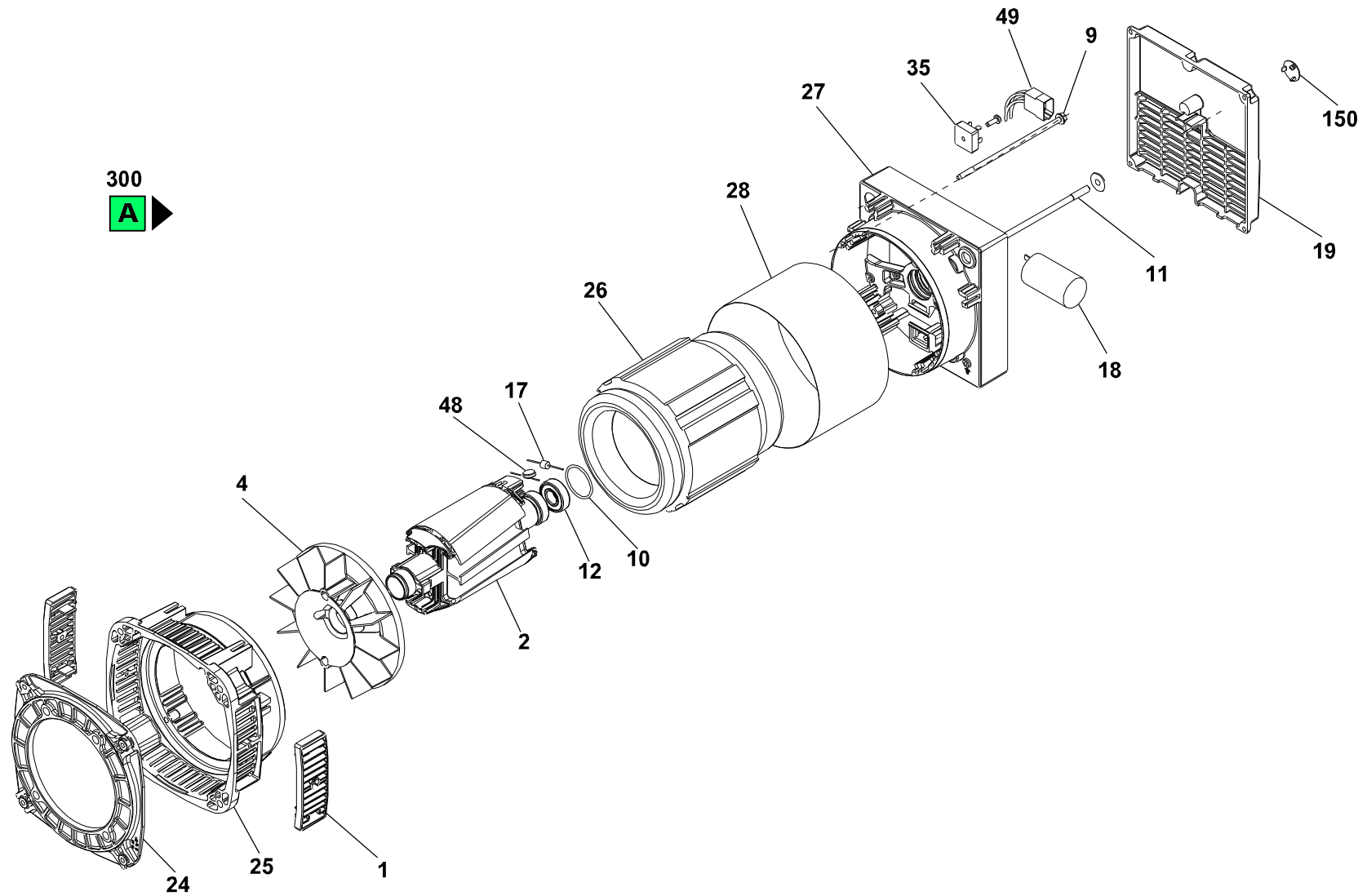
Copyright 2016 Pramac Group, All Rights Reserved.



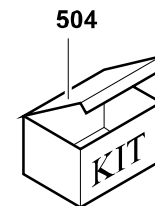
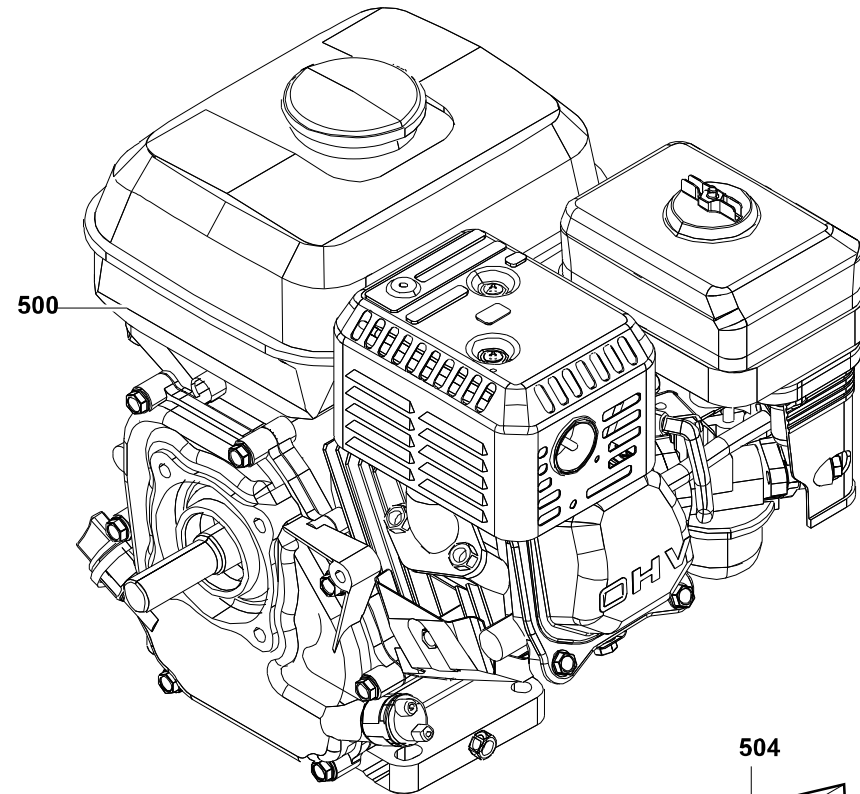
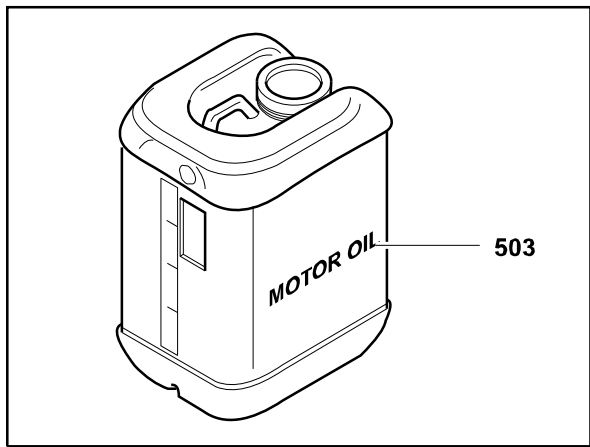
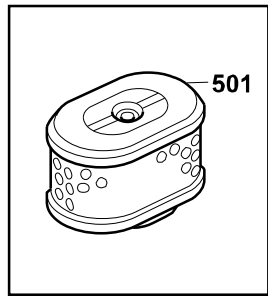
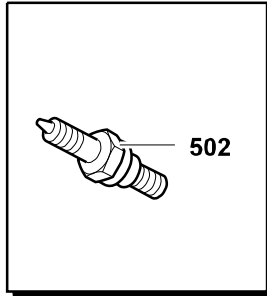
Position	Part Number	Description	Notes
100	VA40025001-PRAMACB	Complete Frame 5000 Painted	-
101	G052112	Cylindric Silent-block Mf-30x30-m8x15-m8-60	-
102	G052116	Cylindric Silent-block Mf-40x45-m10x25-m10-45	-



Position	Part Number	Description	Notes
1	PAN1GGA10014	Alt. Grill	-
2	PAN5AA121817	Rotore Avvolto Se100e J609bc22-25.4	-
4	PAN1VGA10003	Fan	-
11	PAN7TZUN08157	Tension Rod Zinc Plated M8-5/16" Es80a	-
12	G010301	Bearing 6203 2z (17-40-12)	-
17	G69621	Battery Charger Diode 6a - 1200v	-
18	G70698	Capacitor 18mf	-
19	PAN1GGA100111	Frontal Cover Predisp. 2 Shuko 16a + Cb	-
24	PAN3FLA10010	Flangia Accoppiamento J609b C22-25,4 Se100	-
25	PAN3SLA10015	Scudo Anteriore Se100	-
27	PAN3SLA10016	Scudo Posteriore Se100	-
28	PAN3APPL0011N	Shutter Band Es80a	-
48	PANKVZ14L781	Varistore Ossido Di Zinco 14/780vdc	-
300	ANS4200CB0A2AZ	Alt.se 100 E 4,2kva 230v 50hz J609b C22-c25,4	-



Position	Part Number	Description	Notes
1	PAN1GGA10014	Alt. Grill	-
4	PAN1VGA10003	Fan	-
12	G010301	Bearing 6203 2z (17-40-12)	-
17	G69621	Battery Charger Diode 6a - 1200v	-
18	G70698	Capacitor 18mf	-
19	PAN00002	Cover 1 Presa Cee + 1 Presa Schuko + 1 C. Breaker	-
	PAN3M12ST215	Alt. Se100 Cover With 2schuko+c. Breaker	-
24	PAN3FLA10010	Flangia Accoppiamento J609b C22-25,4 Se100	-
25	PAN3SLA10015	Scudo Anteriore Se100	-
27	PAN3SLA10016	Scudo Posteriore Se100	-
35	PANKPD25A02	Ponte Raddrizzatore Monofase 15°-200v	-
48	PANKVZ14L781	Varistore Ossido Di Zinco 14/780vdc	-
150	PAN7PRTS0232	Plastic Plug Es80	-
300	▲ ANS4200CB0ACAX	Alternator K100e 4,2/230/50/3000 J609b - Cover 1 Cee 230v 16a + 1 Schuko 16a + C. Breaker - Ip23 - Nsm	Valid for products manufactured from 25/11/2011
	▲ ANS4200CB0A3AZ	Alternator K100e 4,2/230/50/3000 J609b C22-c25,4 - Cover Post. Cablata Se/m100: 2 Schuko Protette + T 15a +	Valid for products manufactured until 25/11/2011



Position	Part Number	Description	Notes
500	▲ EHA90BB33Z	Engine Honda Gx270u Vxb7 Air_3000_mech_j609b-_handstart__ver/sp:	Valid for products manufactured until 03/03/2011
	▲ EHA90BB33Y	Engine Honda Gx270ut2 Vxb7 Air_3000_mech_j609b-_handstart__ver/sp:	Valid for products manufactured from 03/03/2011
501	PEH17210-ZE3-505	Air Filter Gx390 Gx270 Ex Ref: Ze3-010	-
502	PEH98079-56846	Spark Plug Bpr6es	-
503	P3KI00299	Kit Pramac Power	-
504	P3KI00007	Maintenance Kit E5000-e8000 Exp.-es8000 Exp Hgw180-hgw210-w170-w210-pw240-pw3000 Gx160	-